



CLASSIC PRE B1 native balanced preamplifier

CLASSIC B1 is a preamplifier designed to further improve the sound reproduction of previous preamplifiers we built. We are not afraid to say that we have entered a new era of low-noise, high-harmonic-contrast circuitry. This was possible thanks to a new circuit design, a modern volume control system, latest generation components and a series of advanced features that guarantee you crystal clear and precise sound.

One of the main features of CLASSIC B1 is its ability to amplify the audio signal without distortion and with a high dynamic range. The sound is reproduced with the highest possible fidelity, without background noise, alterations in the frequency response and the typical distortion that limits the dynamic sense of the music.

The B1 is also equipped with a number of audio inputs and outputs, making it compatible with a wide range of devices. An exceptional MM phono input, two balanced inputs and 3 line inputs make it possible to use the preamp with any source, from CD players to turntables. The optional **DAC with Hyperstream technology implemented on the SABRE ESS 9038 PRO** further expands the possibilities of connections for digital and streaming usability with an exciting level of unparalleled playback.

Finally, we also designed it to be easy to use and set up. Thanks to its simple and intuitive interface, you can set up the preamp in just a few minutes and start enjoying high-quality sound intuitively.



Balanced and dual mono circuitry

In the new B1 we have substantially increased the power of the power supply stage and we have developed the entire project with a dual mono philosophy. Each channel of the preamplifier has separate and excellently filtered and stabilized power supplies, as well as the entire ground planes. This allows for extremely effective channel separation which translates into a very natural sound, with incredible and realistic focus and stage reconstruction. Each instrument remains well focused in space and the powerful power section promotes unprecedented dynamics.

The cabling reduced to a minimum, the conversion of the line inputs to balanced, 2 xlr inputs and the possibility of equipping the preamplifier with a high-performance DAC, which can always be updated in the future, guarantee absolute and immutable performance over time.

The entire project is completed by a high-performance PHONO RIAA section for lovers of vinyl records.

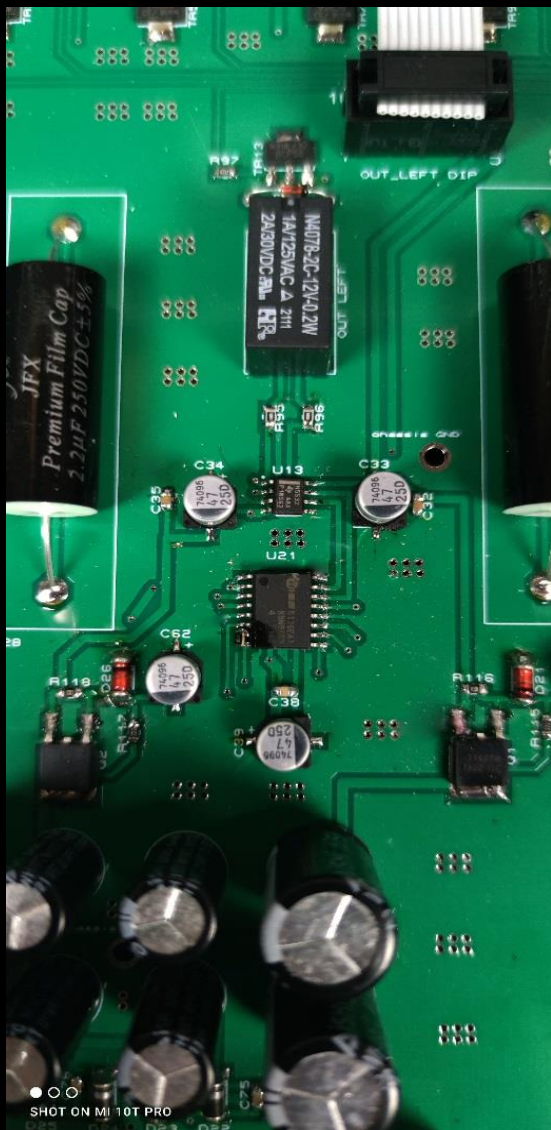
The balanced circuitry behind the preamp. It is our philosophy and we are proud to develop it to the best of our ability and always.

There are many conflicting opinions on this configuration. There are those who say that it is useless in the domestic environment, those who say that it degrades and dirty the sound, others that it only serves to determine a higher cost of the equipment for purely commercial purposes.

In part, all of this could only be true if this aspect of the project is neglected or poorly designed.

Recent technical field tests have also demonstrated that if the overall project is executed to perfection, the final result can be considered the maximum in terms of musicality, transparency and dynamics.

In the **CLASSIC B1** nothing has been left to chance, starting from a dual mono power supply and circuitry up to the actual heart where each amplification section is double. including the innovative volume control that uses two separate stages for each channel on an array of digitally controlled MOSFETs. Furthermore, thanks to its native balanced nature, even single ended line inputs are entirely converted to balanced, including the PHONO RIAA stage. Simply put, you won't hear a more dynamic and transparent preamp than this one.



The volume control section, a stage not to be underestimated.

The most delicate, fundamental part and to be treated with extreme care, because it is also this stage that overall determines the general performance of reproduction

Unlike many manufacturers who use classic motorized potentiometers, we have developed a completely different stage which guarantees the project a set of very important performance advantages. We have implemented gain control via an array of armored Mos-fets in a special IC which are controlled digitally. As a first factor, we have forever eliminated the wear of the carbon layer typical of traditional potentiometers and this forever eliminates the onset of the annoying Hum & Noise and Pop & Click that are inevitable with wear over time.

Another advantage that is often overlooked is the linearity of the response which is modified as the volume increases or decreases with the use of carbon layer potentiometers or even the more sophisticated resistor array potentiometers.

This happens when a resistance is found in the signal passing through the potentiometer which also modifies its impedance factor and which causes this artefact.

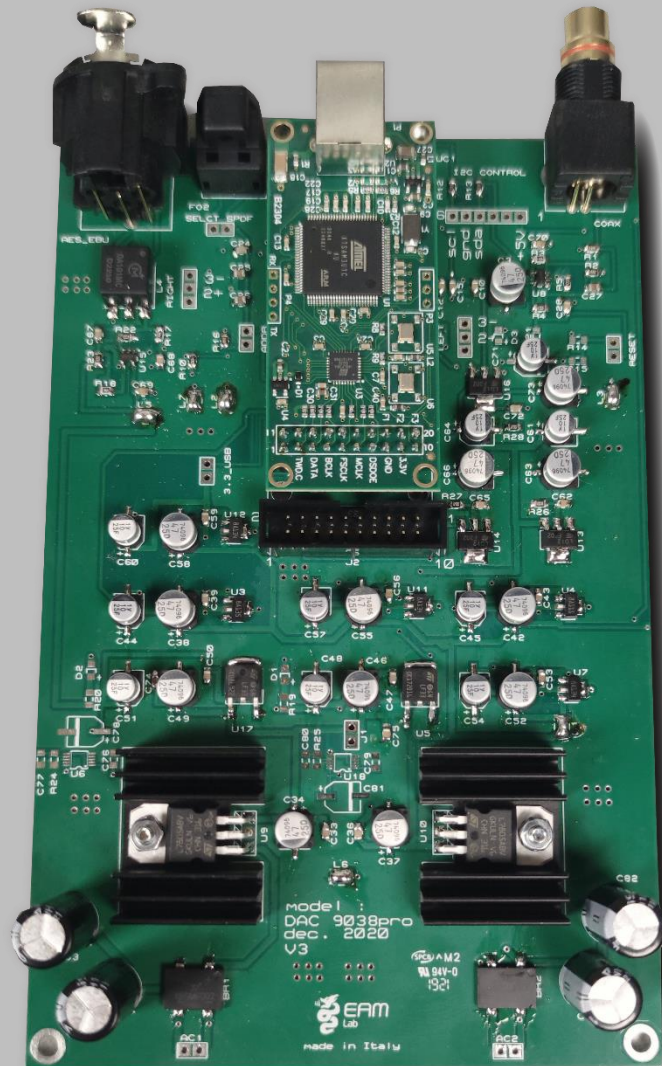
Thanks to our technology, however, this problem has been definitively eliminated because the signal does not see a resistance that varies as the knob changes but rather a network of mos-fet devices that act directly on the feedback of a high impedance and high bandwidth operational amplifier.

The optional DAC section:

it is possible to equip the preamplifier with a latest generation DAC stage which further expands the B1 inputs for new digital technologies. 4 additional inputs USB, COAX, OPTICAL and AES/EBU make the preamplifier extremely versatile with a wide choice of connection options to best enjoy your music from your favorite source.

Whether it is usable from streaming, from a CD player or from the television, with this section you will get the best in terms of reproduction and musicality.

The project is developed on a **SABRE 9038PRO** device with 8-channel 32-bit Hyperstream architecture and an SNR ratio of over 140 db which allows it to have shocking dynamics and "sweetness".



The DAC reads files with conversion up to 784 KHz in PCM and DSD 256 in Dop or DSD 1024 natively.

Installation is very simple and the firmware automatically recognizes the DAC connection, enabling the appropriate controls and service menu section on the display.

Datasheet

Native balanced dual mono preamplifier

- **Input**

2 ingressi bilanciati via XLR

3 ingressi linea

1 ingresso phono RIAA MM

- **Output**

1 xlr bilanciato

1 RCA single ended

- **Input impedance :**

22 Kohm via XLR , 22 Kohm via RCA

- **Slew/rate**

35 V/uS

- **Frequency response**

Da 20 hz a 40 Khz +/- 0.2 db -

- **THD**

0.0002% @ 4 Vrms da 20 hz a 20 Khz

- **Phono input**

MM – 47Kohm – 41 db gain

- **DAC section**

USB – 784 Khz pcm – DSD256 in Dop mode / DSD 1024 nativo

COAX

Optical

AES/EBU via XLR

- **Channel separation** > 80 db

- **SNR weighted A** >104 db

- **Dimension** 35 x 42 x 11 cm. (P x L x H)

- **Weight** 10 kg

- **Optional display colour**

white, yellow, green, blue

REMOTE CONTROL INLCUDED



www.eamlab.com

Made in Italy